



California Wireless E9-1-1 Routing on Empirical Data (RED) Project

California 9-1-1 Office

James M. Thompson
Wireless E9-1-1 Project Coordinator

Empirical Data Kick-Off

July 24, 2008

Routing on Empirical Data

- ◆ **Contract issued by California 9-1-1 Emergency Communications Office (9-1-1 Office)**
- ◆ **Awarded to Boar's Head Corporation using MSA 2034 Consulting Contract**
- ◆ **CHP Ventura jurisdiction covering Ventura and Santa Barbara Counties**

9-1-1 Program Mission

To enable Public Safety Answering Points (PSAPs) to provide the fastest, most reliable, cost-effective and secure access to emergency services from any device, anywhere in California.

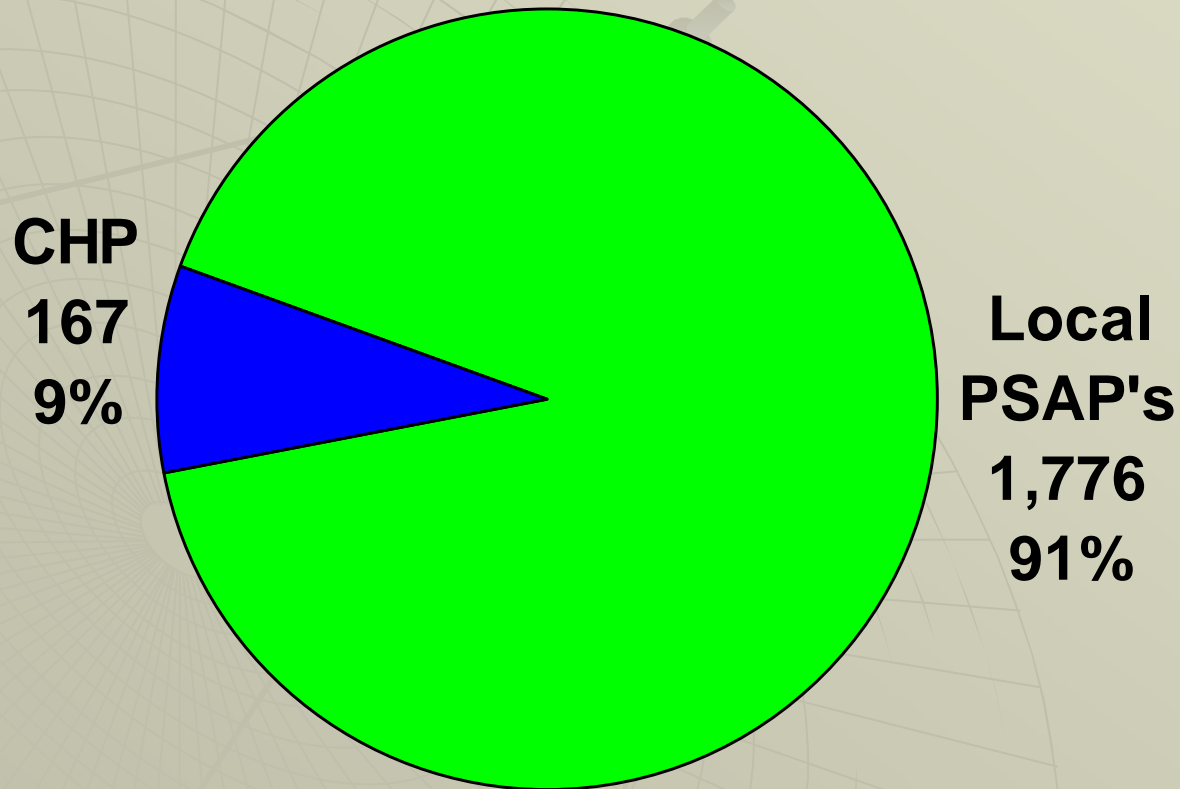
Wireless Facts

- ◆ **US Subscribers grew from 55M in 1997 to 253.4M in 2007. Worldwide there are 2.3B subscribers.**
- ◆ **81% of the US population uses cell phones and used 2 Trillion wireless minutes in 2007.**
- ◆ **12.8% of US households are "wireless only."**
- ◆ **Californians placed 23.3 million E9-1-1 calls in 2007 and 11.6M (50%) were wireless.**
- ◆ **Current estimates are that 58% of E9-1-1 Calls are wireless.**
- ◆ **Everyday in California an estimated 31,823 E9-1-1 wireless calls are made.**

Background

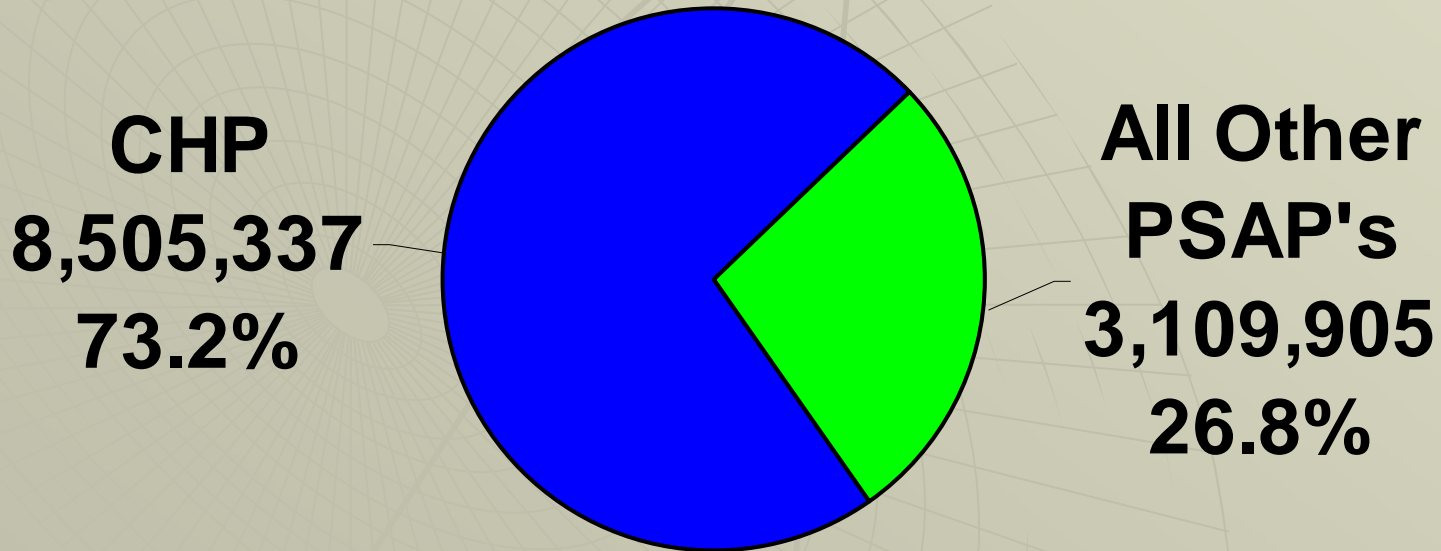
- ◆ **Original sector routing (CPUC Sec 2892, June 2000)**
- ◆ **Routing to Local PSAPs (AB1263, Jan 2001)**
- ◆ **CHP Re-Routing Process (CPUC Sec 2892, updated from SB 911, Jan 06)**
- ◆ **Buffer Zone Trial (Oct 2007)**
- ◆ **Routing on Empirical Data (June 2008)**

2007 Funded 9-1-1 Work Stations



2007 Statewide Annual Call Distribution

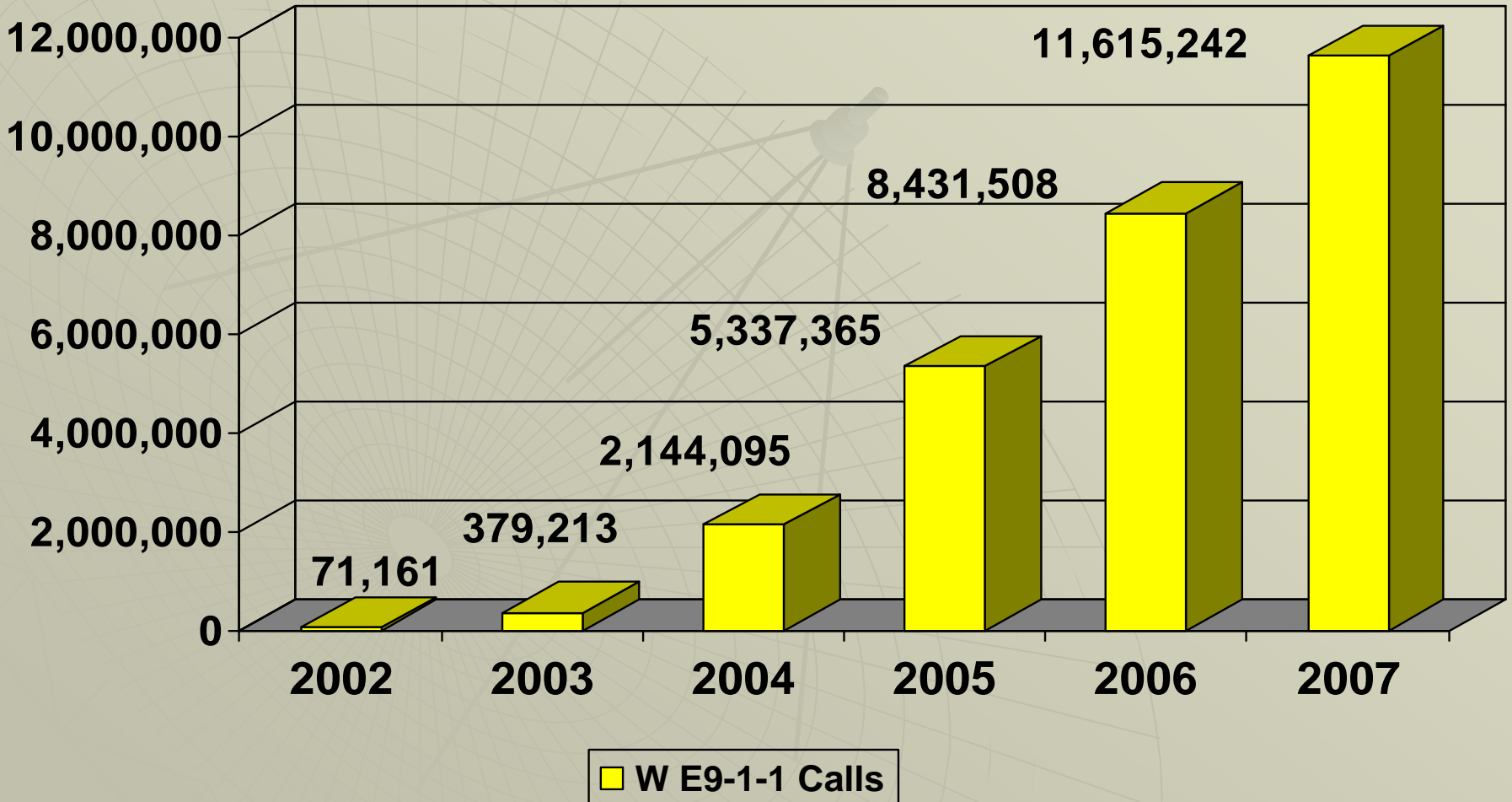
Every month California receives an average of 967,937 Wireless E9-1-1 Calls.



2007 Statewide Annual Call Distribution

- ◆ **CHP received**
 - **50,930 Calls/Workstation**
- ◆ **Local PSAPs received**
 - **8,354 Calls/Workstation**

2007 Wireless E9-1-1 Network Call Volume



Buffer Zone Trial

- ◆ **Buffer Zone will continue in Los Angeles area**
- ◆ **Buffer Zone and Empirical Routing will occur in parallel**
- ◆ **Evaluation will be occur**

Routing on Empirical Data

- 1. Boundary Shape Files**
- 2. Call Data for each Cell Sector**
- 3. Develop and Provide Reports by WSP**
- 4. Provide Top 20 Sector Reports**
- 5. Develop and Prepare Redeployment Plan**
- 6. Coordinate Redeployment Plan**
- 7. Monitor and Evaluate Progress**
- 8. Sector Analysis (30 Days Post Deployment)**
- 9. Provide Closure Report**

Participants

- ◆ **CHP**
- ◆ **Local PSAPs**
- ◆ **County Coordinators**
- ◆ **Wireless Service Providers**
- ◆ **State 9-1-1 Office**
- ◆ **Boar's Head Corporation**

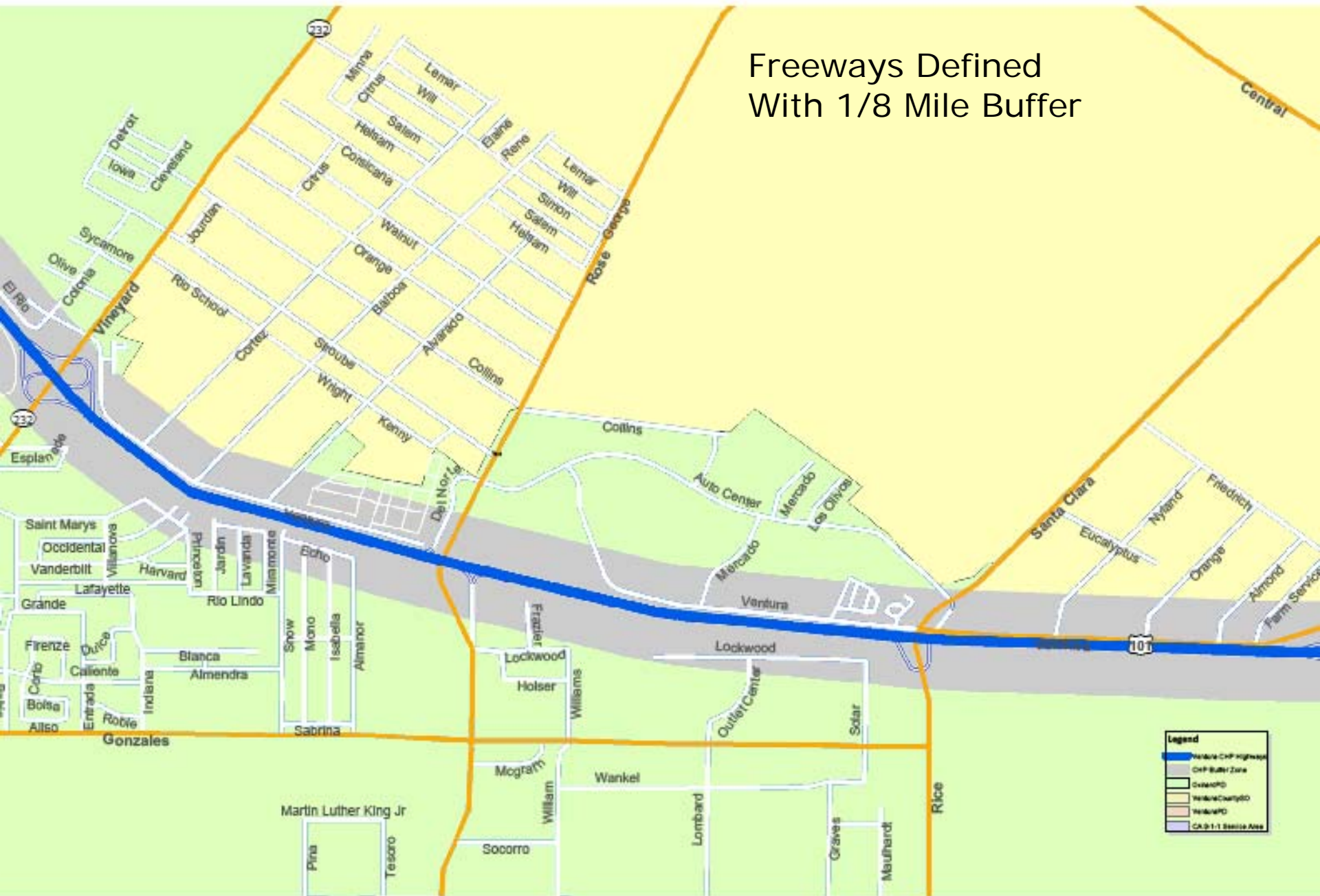
Boar's Head Corporation

- ◆ **AKA Public Safety Network**
- ◆ **15 years experience**
- ◆ **9-1-1 statistical data gathering and reporting**
- ◆ **Plotting of call statistics**
- ◆ **State of California 9-1-1 Call Detail Records**
- ◆ **Current 9-1-1 technologies and wireless deployments**

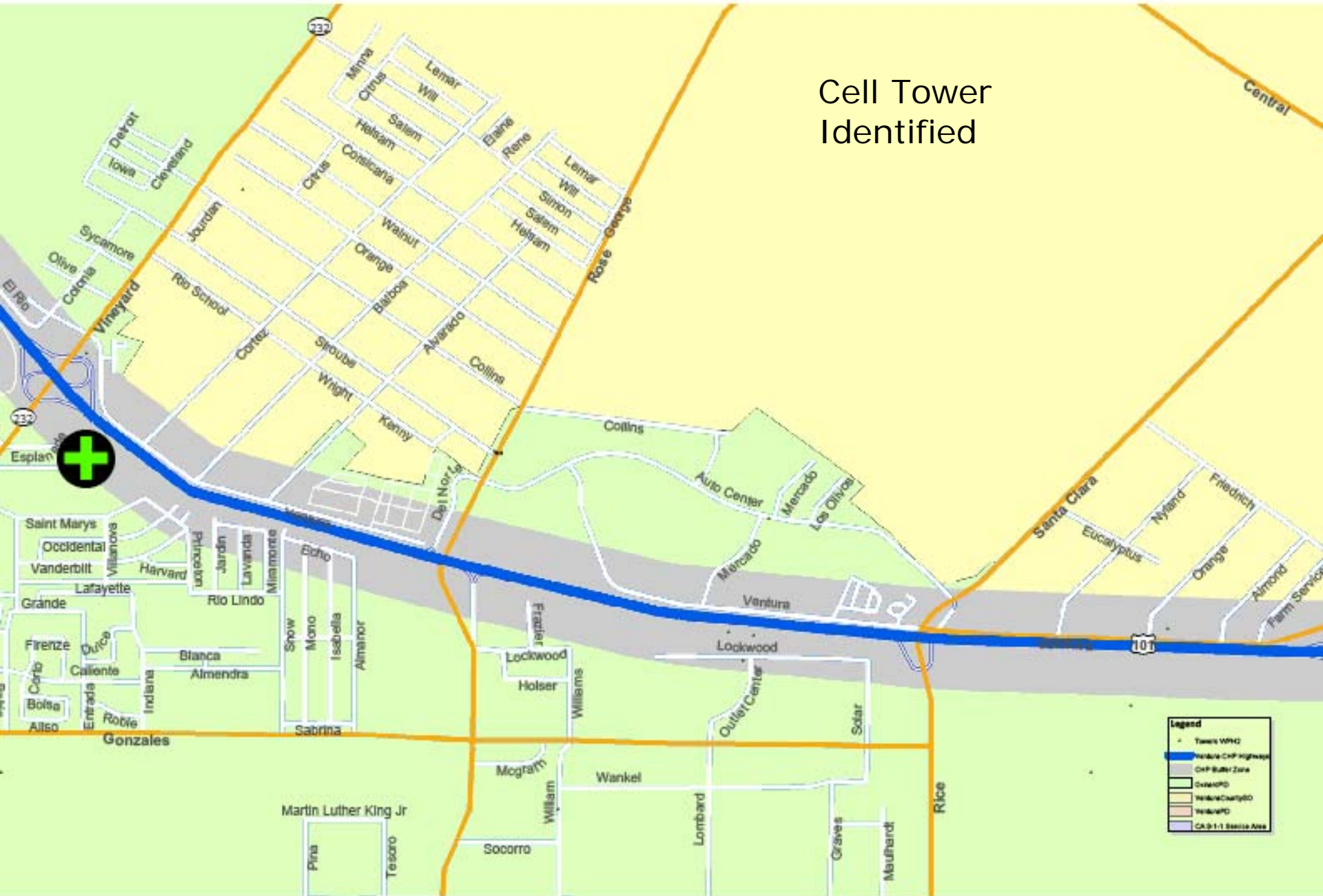
Freeways Defined



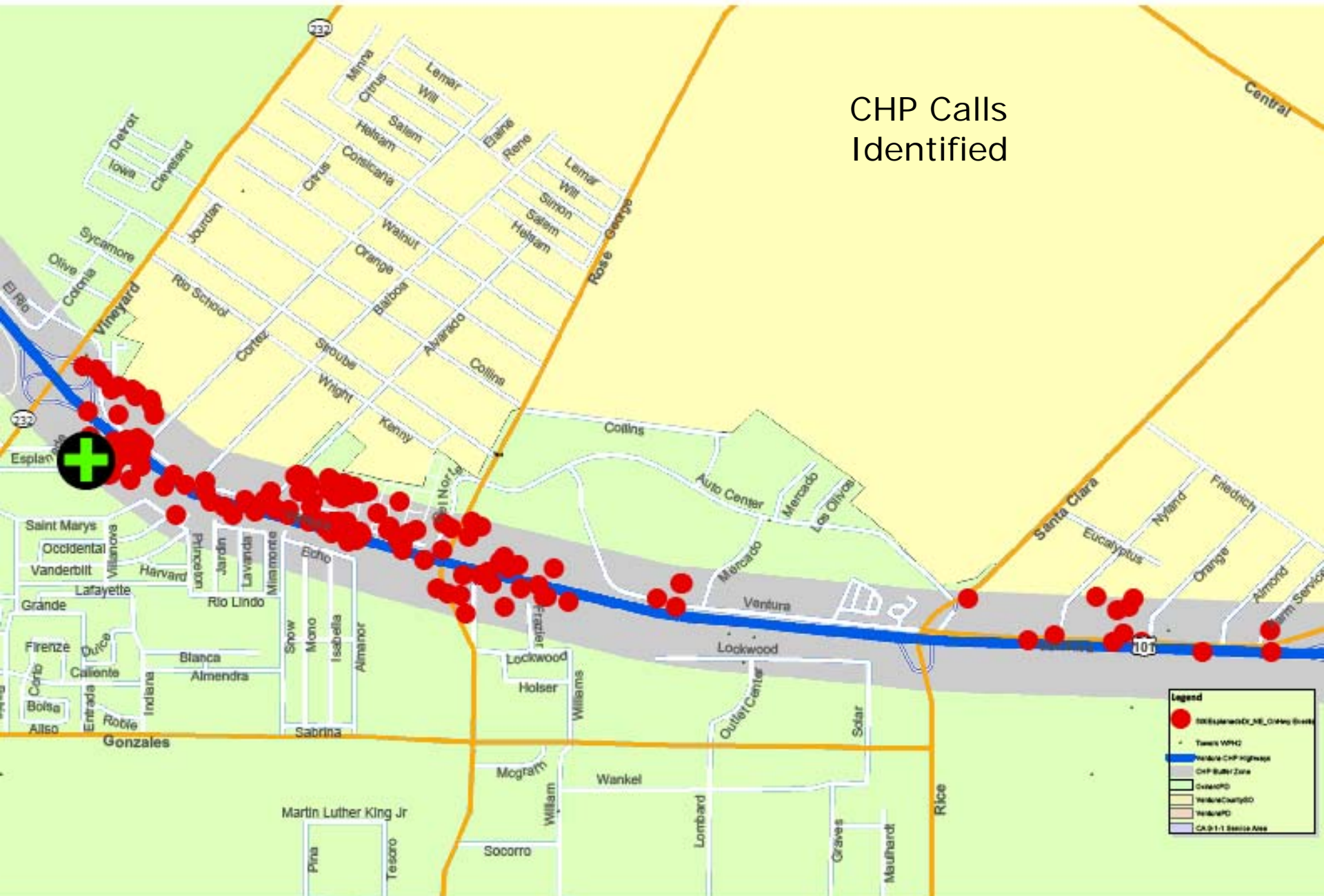
Freeways Defined With 1/8 Mile Buffer



Cell Tower Identified



CHP Calls Identified



Schedule

- ◆ **Start Date: July 14, 2008**
- ◆ **Target End Date: November 24, 2008**
- ◆ **~ 135 Days**

Questions and Answers

