

# *'CSI' for Dispatchers*



First Contact 9-1-1, LLC  
*[www.firstcontact911.com](http://www.firstcontact911.com)*  
*(866) 613-1911*



# Disclaimer

- First Contact 9-1-1 presents the following material derived from public sources. Our presentation is educational in nature, and should not preclude agency policy, procedure or best practice in the performance of the tasks described within.



# *Your Presenter: Dave Larton*

- Special thanks to:
  - **Todd Fort**, Chief Deputy/Coroner
  - **Tracy Felty**, 9-1-1 Manager/Deputy Coroner

***Saline County (IL) Sheriff's  
Department***



# What the Public Thinks...

- What's the public's perception of what CSI is?
- What *REALITY* is...



# Definition of a Crime Scene

- Location where any part of a criminal act occurred
- Location where evidence relating to a crime may be found
- When Law Enforcement is involved, ***everything is a crime scene until the police say otherwise!***

# ARISN

- Approach the scene
- Render medical aid
- Identify witnesses and victims
- Secure the scene and physical evidence
- Make appropriate **N**otifications



# Thinking Out of the Box...

- Traffic Accidents
- Property Crimes
- Incidents involving Children
- Multiple Crime Scenes
- Domestic Violence
- Drug Scenes/Meth Labs



# The Role of Evidence

- It cannot lie, forget or be mistaken
- It's demonstrable
- It's not dependent on witnesses
- It may be the only way to establish the elements of a crime



# Types of Evidence

- Trace
- Transfer
- Indented
- Striated
- Geometric
- Chemical



# Property Crimes (Burglary)

- Where is the Point of Entry?
- Evidence could be widespread
- Mostly inside the crime scene
- Where is the Point of Exit?



# Get witness statements

- 9-1-1 tapes provide fresh statements that are recordable/playable
- The tapes can later be compared with witness/victim/suspect statements
- Get a name and callback number



# Keep people out of the area

- Instruct callers not to touch anything
- Instruct them to leave the same way they entered



# Property Crime: Burglary

- Instruct the caller not to disturb anything
- Don't let them walk around the area
- Are *they* safe?



# Protecting the Scene

- Leave lights, drapes, furniture exactly in the positions found
- Don't put anything back where it belongs



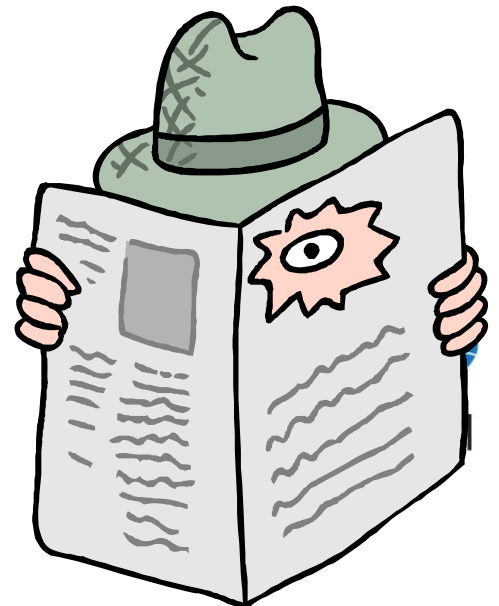
# Tool Mark Impressions

- The Reporting Party may accidentally tamper evidence



# Everybody 'sees' something

- Not everyone 'sees' the same thing
- Get as many statements on the line as you are able to...



# Don't step in evidence

- Evidence can be disturbed or obliterated
- Evidence may be pressed into soil



# Evidence is fragile

- Sand, snow or mud may preserve evidence



# Let ALL responders know what you have...

- Firefighters or medics may unintentionally disturb evidence
- Shoe/fingerprints may be taken
- Rescue / Medical Aid must come before evidence preservation
- Document all responders



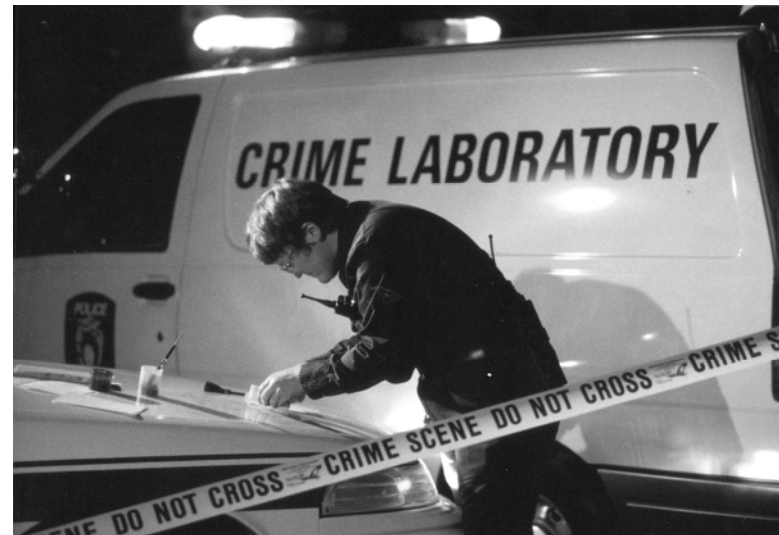
# Every scene is a Crime Scene

- All scenes need to be ruled an accident *or a Crime Scene* by responding officers



# 'Suicide' Calls

- How does the caller know it was a suicide?
- Why do they believe the victim is dead?
- Are there other people in the area?



# Assault Calls

- Bruises fade quickly
- Have the RP not wash or change clothes until officers can respond



# Assault Calls

- Keep Caller on the Line
- The subject could come back
- ...in a car? ...on foot? Where could they be going? (Potential Crime Scene)
- Suspect and Vehicle Descriptions are important early on

# Pictures tell the story

- Assault wounds are frequently in areas not easily seen by the public



# Homicide/Death Scene

- All deaths are considered a homicide until proven otherwise
- Don't jump to conclusions on an Elder Death call
- Suicide by wrist, or slashing of the throat is almost always a homicide

# Meth/Drug Lab

- San Jose, CA February 2009 - man taken to hospital by paramedics with powder on him, infecting the Emergency Room, ambulance and the entire hospital
- A total of 27 patients treated

# Keep your documentation straight...

- Write it as you read it...
- It's considered a legal document
- Don't use unnecessary abbreviations or codes that people won't understand
- No personal declarations
- Suspect or victim's statements quoted (no paraphrasing...)

# Phrases to Avoid...

- 'It appeared to me'
- Cause, manner or mechanism of death
- Guessing at time of death
- Using the words 'Crime Scene'
- 'Suspect', 'Bad Guy', 'etc.'

# Questions and Comments?

- Ask your detectives for more information on what you may do to assist them...
- Ask away...from me... and the Group!



Enjoy the Conference!



First Contact 9-1-1, LLC  
*[www.firstcontact911.com](http://www.firstcontact911.com)*  
*(866) 613-1911*

